

# **TranzSporter**

## **Owners Manual**

### **LH200**

### **Platform Hoist**

- **Lift Hoist 200 lb. Capacity**
- **Quick Change Drum**
- **Collapsible Carriage**

**Updated 1/3/2012**



Instructions #08100

**TIE DOWN ENGINEERING • 255 Villanova Drive SW • Atlanta, GA 30336**  
**www.tiedown.com (404) 344-0000 Fax (404) 349-0401**



010312,E1225

# **Congratulations on your Purchase of the TranzSporter Lift Hoist.**

**The TranzSporter Lift Hoist - Series was designed to last.**

## **Features include...**

- Collapsible Carriage Assembly
- Unitized Design - Fewer parts, stronger, less maintenance
- Non-Slip Carriage Deck - Safer operation
- Heavy Duty Aluminum Track - Absorbs more punishment
- Tethered Push Pin - Keeps deck in place when transporting or when operator is away from the hoist.
- Dual Brake System - Better control, longer brake life
- Hi-Impact Nylon Belt Guard - Safer operation
- Oven baked, Black Powder Coat Finish - Durable, long lasting
- Wide Foot Plate - Better control of lift operation
- Permanent Safety Information - Combination of stamped-in safety information and decal's remind your operator to use hoist in a safe manner
- Large Steel Foot Pads - Adds more stability, lasts longer
- Extended Brake Handle - Keeps operator away from hoist when raising or lowering materials

## **User Responsibilities**

### **PERFORM THE FOLLOWING AT THE START AND END OF THE WORK DAY AND AFTER 4 HOURS OF OPERATION DURING THE DAY:**

- Check oil level in engine and fill according to manufacturer's specifications.
- Check cable for smooth operation and for signs of wear.
- Check for loose bolts and tighten according to specifications.
- Check track sections and all other moving parts for excessive wear or fatigue.
- Check general condition of equipment.
- Check operator's understanding of the proper operation for this equipment.
- Check extension cords and connections for wear or damage.
- Check brake parts regularly for wear or damage.
- Check cable drum bearings, they should run smoothly when the brake is released. If there is any noise or if the cable drum does not spin freely, replace drum bearings immediately.

**WARNING: DO NOT OPERATE THIS EQUIPMENT IF ANY UNSAFE CONDITIONS EXIST OR OCCUR DURING OPERATION.**

**Remember: Safety First!!**

## REPAIR INFORMATION

Your Lift Hoist is designed to provide years of service, however, when your hoist requires parts, service or repairs, please contact your nearest authorized dealer, or call 1-800-241-1806, ext. 1525 for information on where to take your platform hoist.

### WARNING:

- **KEEP TRACK SECTION CLEAR OF ALL ELECTRICAL WIRES AND EQUIPMENT**
- **BE AWARE OF OVERHEAD OBJECTS**
- **NEVER USE HOIST AS A LADDER**
- **NEVER OPERATE HOIST WITH A HUMAN ON PLATFORM**
- **NEVER STAND UNDER PLATFORM WHEN LOWERING**
- **NEVER USE INDOORS OR IN AN AREA WITH POOR VENTILATION**
- **NEVER USE HOIST TO LOWER MATERIALS**

### PLEASE READ!

The equipment described herein has been engineered to perform specific lifting tasks, with a minimum of risk to the operator. The instructions for operation and safety contained herein were designed to help insure that this equipment, performs its function, as stated without adding to the endangerment of persons, equipment, and/or materials.

#### LH200 - Series Specifications:

##### 200 lb. MAXIMUM Hoisting Capacity

LH - Series- gasoline power unit - (4 hp. Lifan Engine, 4 hp. Honda or High Torque Electric Motor)

Self-energizing brake, 3 ft. steel base section, 8 ft. track sections.

# **TranzSporter**

## **Limited Warranty for all models**

### **Replaces all dated or undated limited warranties dated before May 1, 2001**

Tie Down Engineering, Inc. will repair or replace, free of charge, any part, or parts of the TranzSporter lift hoist that are defective in material or workmanship or both. The limited warranty is in effect for 90 days from date of purchase. Return the defective unit to the dealer or contact Tie Down direct at 800-241-1806, x329.

THERE IS NO OTHER EXPRESS WARRANTY IMPLIED WARRANTIES INCLUDING THOSE OF MERCHANTABILITY AND FITNESS FOR A PARTICULAR PURPOSE ARE LIMITED TO ONE YEAR FROM PURCHASE OR TO THE EXTENT PERMITTED BY LAW AND ALL IMPLIED WARRANTIES ARE EXCLUDED TO THE EXTENT EXCLUSION IS PERMITTED BY LAW. Some countries or states do not allow limitation on how long an implied warranty lasts and some countries or states do not allow the exclusion or limitation of incidental or consequential damages so the above limitation and exclusion may not apply to you. This warranty gives you specific legal rights and you may also have other rights which vary from country to country and state to state.

**TIE DOWN ENGINEERING • 255 Villanova Drive SW • Atlanta, GA 30336**  
**www.tiedown.com (404) 344-0000 Fax (404) 349-0401**



# Safety instructions

**CAUTION:** Please read the safety warnings and Instructions contained in this manual before operating the lift hoist. Failure to obey the warnings contained herein could result in personal injury or damage to the equipment; however, this information should not be a substitute for routine accident prevention, but rather an addition to routine accident prevention.

## GENERAL SAFETY INSTRUCTIONS:

1. Transport and handle your lift hoist with care.
2. Unpack the TranzSporter carefully and inspect for any damage that may occur during transportation. **DO NOT USE THE HOIST IF ANY PART IS DAMAGED**
3. Please observe all safety and warning labels attached to the hoist.
4. Use only replacement parts furnished by the manufacturer.
5. Always keep the area around the base section of the TranzSporter hoist clear to help prevent slipping, tripping or falling against the hoist.
6. **DO NOT ALLOW ANYONE TO OPERATE THE TRANZSPORTER HOIST WHO HAS NOT BEEN THOROUGHLY AND PROPERLY TRAINED IN THE CORRECT OPERATION AND USE OF THIS HOIST.**
7. This hoist is manufactured to lift materials only. Do not use the lift hoist for the purpose of transporting personnel from one level to another.
8. Do not climb the lift hoist or use as a personnel ladder.
9. Do not overload - maximum lifting capacity for the LH200 is 200 lbs. with a load capacity of 180 lbs.
10. Keep hands, feet and other body parts as well as clothing away from the track sections and moving or rotating parts of the hoist when starting the engine or when operating the hoist.
11. Do not allow any persons to walk or work under or near the hoist while in operation.
12. Do not use this hoist to transport hot asphalt or any other hot molten substance from one elevation to another.
13. Store all parts of the hoist in such a fashion as not to damage any of the components.
14. Do not operate indoors or in an area with poor ventilation.

## Remember: Safety First!!

Warning labels are attached to the LH200 and are weather resistant. If you notice any of these decal's missing from your hoist, please contact TIE DOWN ENGINEERING for a replacement label.

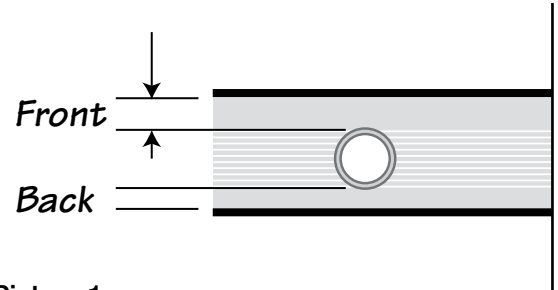


## Assembly Instructions LH200

Congratulations on purchasing the TranzSporter LH200. The three boxes and bundles of tracks contain the assembled parts plus the owner's manual, making up the LH200. Please read the following instructions completely before starting assembly. Refer to the owner's manual for further information on use and maintenance of the LH-200.

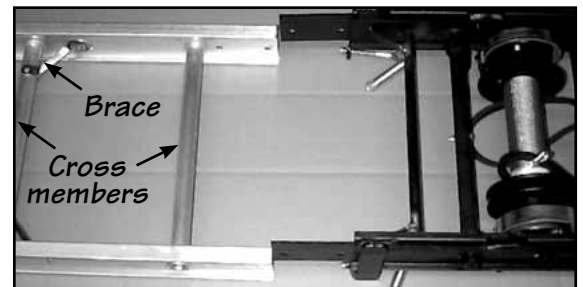
Parts found in the three boxes are:

- (1) Base Section, Manual & Top Cap
- (2) Collapsible Carriage and Plywood Brackets
- (3) Motor Base with Handle
- (4) Track Sections in a wrapped bundle



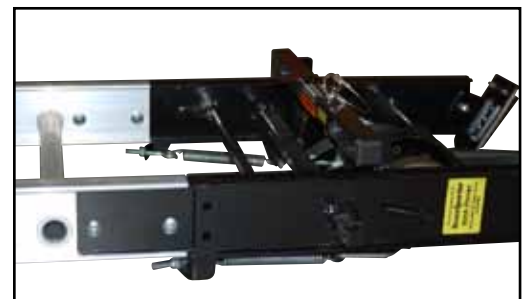
Picture 1

1. Remove all hoist parts from the boxes and place on a clean floor or assembly area. Lay one track section on a flat floor with the "front" side up. This is determined by the space between the track cross bar and the track section edge as shown in picture 1.



Picture 2

2. Remove slice plates from the track section. Attach the track base to the bottom of the track section using four 3/8" x 3/4" hex head bolts provided or the bolts used in attaching the splice plates. Note: The track base mounts to the outside of the track section as shown in picture 3. The bottom of the track section is determined by making sure the braces are below the cross bars as shown in picture 2.



Picture 3

3. Starting at the top of the track section slide carriage assembly onto track section so that the four rollers connect to the top rail of the track section as shown in picture 4. "Roll" carriage assembly to the base. At this time lock the base in place using the latch pin as shown in picture 5.



Picture 4



Picture 5

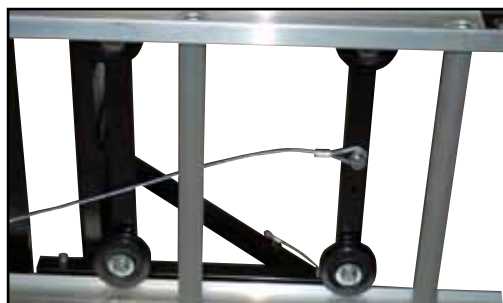
4. The top cap is bolted to the end of the last section of track section you intend to use. Assemble as shown right using two 3/8" x 3/4" hex head bolts with lock nuts provided.



5. Attach splice plates to the bottom section of the track. **Splice plates are mounted on the outside track section.** Slide the top section track into the grooves on the inside track section, attach with 2 nuts and bolts per side. Shown left.

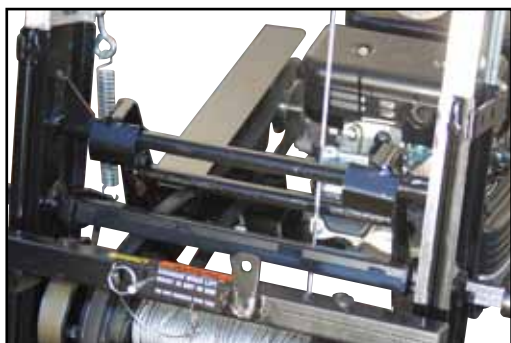


Picture 6



Picture 7

6. From the back side of the hoist, remove the end of the cable from the drum. It helps to attach the brake handle, pulling back releases the brake drum. The cable will then easily un-spool. Staying on the outside of the base section and track section, take the cable to the top of the last track section where the cap and pulley are attached. Feed the cable end through the pulley as shown in picture 6, and down the front side of the track section to the back of the carriage assembly. Attach the end of the cable to the carriage assembly as shown in picture 7.



Picture 8

7. After the track section with base is properly secured to the work site and properly braced, the motor assembly can be attached to the base unit. The foot pad slides under the base section, while "hanging" the motor base as shown in picture 8.

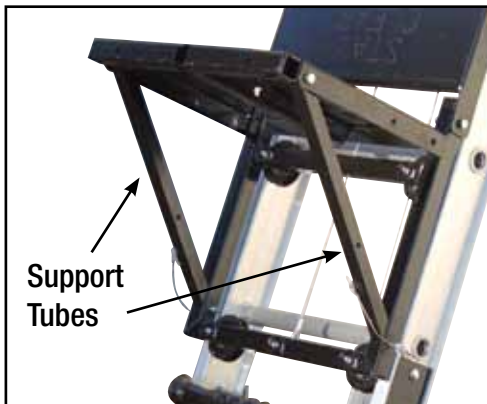
8. Feed the V belt as shown in Picture 9 over the engine gear sheave. There should be enough slack so that it fits loosely.



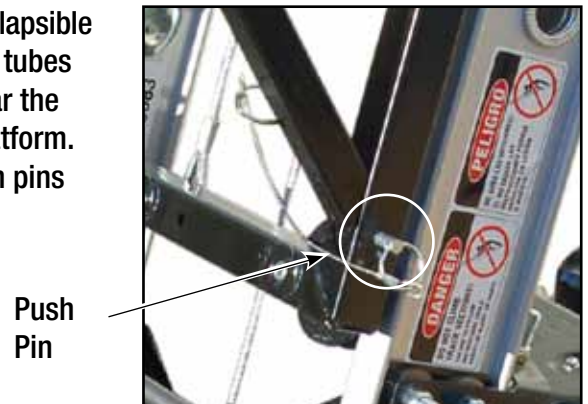
Picture 9



9. Slide the brake handle over the brake arm and tighten thumb screw provided.



10. Place the two collapsible platform support tubes into the slots near the bottom of the platform. Secure with push pins on both sides.



11. If needed, attach the two plywood/rolled goods brackets with the push pins provided (Shown right).



## **GASOLINE POWER UNIT**

1. Handle fuel with care. It is **EXTREMELY** flammable and explosive under certain conditions.
2. Do not smoke, allow open flames or sparks to be present during the refueling operation.
3. Use only an approved fuel container to transport fuel.
4. Do not fuel while engine is hot - allow to cool before attempting the refueling operation.
5. Replace all fuel tank caps securely and wipe the spilled fuel before restarting engine.
6. Do not operate the LH-Series gasoline engine in an enclosed area. The exhaust can be especially hazardous in an enclosed area.
7. Stop the engine and lower the platform when leaving the vicinity of the hoist.
8. Always stop the engine, lower the platform, wait for all moving parts to stop, and allow the engine to cool before disassembling or moving the hoist.
9. Disconnect the spark plug wire from the plug before disassembling or moving the hoist.
10. **DO NOT** store the engine in an enclosed area.
11. Allow engine to cool before storing.
12. **DO NOT** store engine where it might be subjected to flames, sparks, extreme heat or any other source of combustion.

## **Raising the Track Section Assembly**

### **WARNING: KEEP TRACK SECTIONS CLEAR OF ALL ELECTRICAL WIRES AND EQUIPMENT BE AWARE OF OVERHEAD OBJECTS-NEVER CLIMB HOIST!**

The hoist assembly is extremely top heavy and must be kept under control at all times.

Two alternate methods are suggested for raising the platform hoist to the operating position.

### **PROCEDURE "A"**

This procedure requires two or preferably three men.

1. Lay the assembled track sections with the platform attached parallel to the building wall that is to support the hoist.
2. Tie a rope to the head bracket and have the man on roof pull up the hoist while the other man on the ground braces the shoes on the bottom section to prevent slippage of the hoist shoes. The third man on the ground may aid in erecting by "walking" the hoist up hand over hand by the rungs.
3. When the hoist reaches a vertical position, carefully turn the hoist 90 degrees with the platform pointing away from the building. Move the bottom of the hoist away from the building, 1/4 of the height of the building where the top of the hoist is to be supported. Make allowances for overhang. See track section support chart for approximate distances of the base from the bottom track.

### **ALTERNATE PROCEDURE "B"**

1. Place track section assembly perpendicular to the building with the bottom shoes of the steel bottom section resting against the building to prevent slipping.
2. Tie a rope to the head bracket and have the man on the roof pull up the hoist while the other man on the ground braces the shoes on the steel bottom section to prevent slippage of the hoist shoes. The third man on the ground may aid in erecting by "walking" the hoist up hand over hand by the rungs.



3. When the hoist reaches a vertical position, carefully turn the hoist 180 degrees with the platform pointing away from the building. Move the bottom of the hoist away from the building, 1/4 of the height of the building where the top of the hoist is to be supported. Angle of track sections from building should be between 18 and 20 degrees. Make allowances for an overhang. See track section chart for approximate distances of the base from the building.

### **AFTER ERECTING THE HOIST USING PROCEDURE “A” OR “B”, CONTINUE AS FOLLOWS:**

4. Tie the track section to the roof with a rope fastened to a cross tie on the top bracket to prevent slippage of the track section. **DO NOT TIE ROPE TO THE RAILS - THIS WILL PREVENT THE PLATFORM FROM OPERATING PROPERLY.**
5. Mount the power unit to the top rung of the steel bottom section. Attach the V-belt to the pulley on the power unit. Slide the brake handle over the brake arm and install the pin provided.
6. Remove any ropes used to secure the platform during transportation.
7. Make certain the shoes on the steel bottom section are firmly resting on level ground. This will help to prevent track section slippage or uneven loading of the track section which could cause damage or injury to personnel and/or to equipment.

**WARNING: BEFORE LOWERING THE TRACK SECTIONS, CAREFULLY CHECK FOR OVERHEAD OBJECTS AND POWER LINES.**

### **Raising the platform with or without load**

**WARNING: THE OPERATOR OF THIS HOIST UNIT SHOULD WEAR APPROPRIATE SAFETY EQUIPMENT WHICH SHOULD INCLUDE APPROVED HAND PROTECTION, HEAD PROTECTION AND EYE PROTECTION.**

To raise the platform on LH200, face the platform and stand as far as possible from the hoist to operate. Place your foot on the foot control brace to engage the motor to drum belt, permitting the platform to roll up the track section. When the platform reaches the top, release foot IMMEDIATELY. This will apply the self energizing brake. Move away from the hoist while the load is being removed from the platform.

### **Lowering the platform**

To lower the carriage, stand to the right or left side of the hoist and grasp the brake handle. Lightly feather the platform down by engaging and disengaging the brake to slow the carriage. Lower the carriage to the ground at a slow speed (not to exceed 50/feet per minute). Continue to decelerate the platform as it nears the ground to prevent damage to the platform or bottom brace stops.

***DO NOT USE THE HOIST TO LOWER MATERIALS.***

**CAUTION: NEVER APPLY THE BRAKE ABRUPTLY - BROKEN HOIST CABLES AND/OR SEVERE INJURY TO PERSONNEL OR EQUIPMENT MAY OCCUR. MAKE CERTAIN PLATFORM DOES NOT STRIKE THE BOTTOM BRACE STOPS UPON REACHING THE BOTTOM OF THE TRACK SECTION.**

Lower and dismantle the platform hoist assembly in the reverse of the erection procedure, observing all safety procedures.

## Track Section Chart - Brace Support

Track lengths in excess of 28 feet require the use of the telescoping brace (#60005). The table below provides the suggested information for the distance of the bottom track from the building and the location of the track support for various conditions.

Building Height	Length of Track	Base of Track to Building	Track Brace Location Cross Tie from Bottom
42	44(max)	10'6"	25th and 27th
40	44	10'0"	26th and 25th
36	40	9'0"	19th and 21st
32	36	8'0"	14th and 16th
28	32	7'6"	11th and 13th
24	28	6'6"	Not Required
20	24	6'6"	Not Required
16	20	5'0"	Not Required
12	16	4'6"	Not Required



### Telescoping Brace #60005

- Fits all brand track units
- Telescoping from 12' to 24'
- Quick set design
- Provides support for heights over 28'

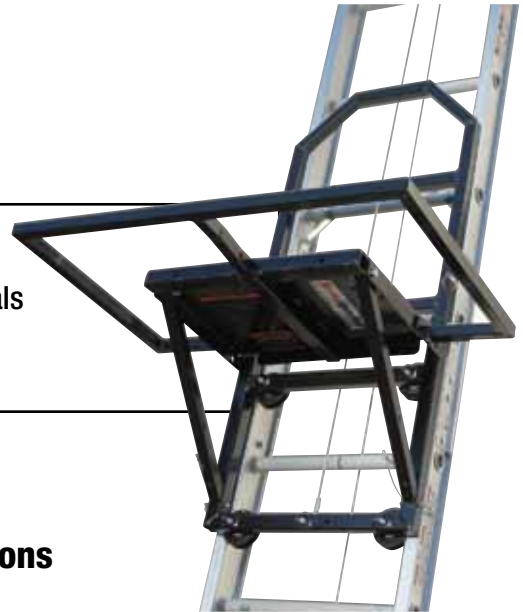
# TranzSporter Accessories

All Sold Separately



## Access Pack

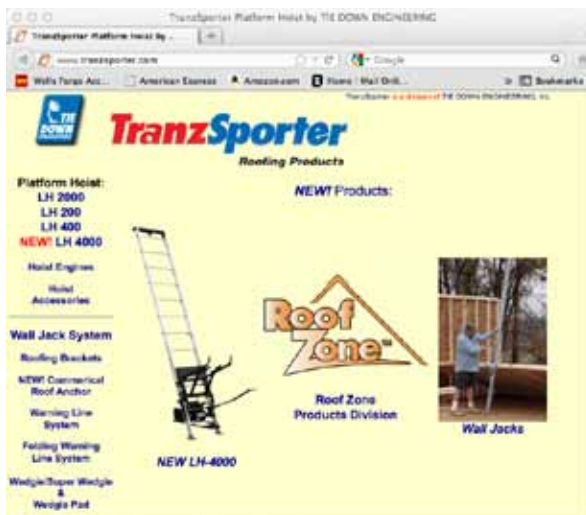
For use with solar panels and other building materials



## Additional Track Sections

- 4', 8' & 16' for all models
- Track sections supplied with splice plates and bolts

**For the Most Up to Date Information and Instructions,  
Visit the TranzSporter Web Site at [www.tranzsporter.com](http://www.tranzsporter.com)**



**For More Roofing Products Visit  
Our New Roof Zone  
Web Site: [www.roofzone.com](http://www.roofzone.com)**



**TIE DOWN ENGINEERING • 255 Villanova Drive SW • Atlanta, GA 30336  
[www.tiedown.com](http://www.tiedown.com) (404) 344-0000 Fax (404) 349-0401**



# Operation of LH-200 & LH-2000 - Safety Instructions

## La operación de LH-200 & LH-2000 Instrucciones de Seguridad

### **WARNING:**

- KEEP TRACK SECTION CLEAR OF ALL ELECTRICAL WIRES AND EQUIPMENT
- BE AWARE OF OVERHEAD OBJECTS
- NEVER USE HOIST AS A LADDER
- NEVER OPERATE HOIST WITH A HUMAN ON PLATFORM
- NEVER STAND UNDER PLATFORM WHEN LOWERING
- NEVER USE GASOLINE MODELS INDOORS OR IN AN AREA WITH POOR VENTILATION

**LH-200 & LH-2000 rated at 200 lbs. load capacity. Do Not Exceed Load Capacity.**

Secure hoist to the roof with a rope fastened to track rung. Move the bottom of the hoist away from the building 1/4 of the height of the building. Angle sections from building should be between 18 to 20 degrees.

### **Raising the platform with or without load**

**WARNING: THE OPERATOR OF THIS HOIST UNIT SHOULD WEAR APPROPRIATE SAFETY EQUIPMENT WHICH SHOULD INCLUDE APPROVED HAND PROTECTION, HEAD PROTECTION AND EYE PROTECTION.**

To raise the platform on LH-2000 & LH-200, face the platform and stand as far as possible from the hoist to operate. Place your foot on the foot control brace to engage the motor to drum belt, permitting the platform to roll up the track section. When the platform reaches the top, release foot IMMEDIATELY. This will apply the self energizing brake. Move away from the hoist while the load is being removed from the platform.

### **Lowering the track section assembly**

**WARNING: BEFORE LOWERING THE TRACK SECTIONS, CAREFULLY CHECK FOR OVERHEAD OBJECTS AND POWER LINES.**

### **Lowering the platform**

To lower the platform, stand to the right or left side of the hoist and grasp the brake handle. Push or pull the handle to release the brake. Lower the platform to the ground at a slow speed (not to exceed 50/feet per minute). Continue to decelerate the platform as it nears the ground to prevent damage to the platform or bottom brace stops.

### **ADVERTENCIA:**

- MANTENGA LA SECCION DEL VESTIGIO DESPEJADA DE TODOS ALAMBRES Y EL EQUIPO ELECTRICOS
- CUIDADO CON LOS OBJETOS DE ARRIBA
- NUNCA LA USE COMO UNA ESCALERA
- NUNCA OPERE EL TORNO CON UN HUMANO EN LA PLATAFORMA
- NUNCA SE PARE ABAJO DE LA PLATAFORMA CUANDO ESTE DESCENDIENDO
- NUNCA USE MODELOS DE GASOLINA ADENTRO O EN AREAS CON POCA VENTILACION

**LH-200 & LH-2000 valorado en 200 lbs. capacidad de carga. No Exceda la Capacidad de la Carga.**

Asegure el torno al techo con un lazo abrochado para rastrear el escalon. Mueva el fondo del torno lejos del edificio 1/4" de la altura del edificio. Las secciones del ángulo del edificio deben estar entre 18 a 20 grados.

### **Levantar la plataforma con o sin carga.**

**ADVERTENCIA: EL OPERADOR DE ESTA UNIDAD DE TORNO DEBE VESTIR EL EQUIPO APROPIADO DE SEGURIDAD QUE DEBE INCLUIR LA PROTECCION APROVADA DE MANOS, CABEZA Y OJOS.**

Para levantar la plataforma en LH-2000 & LH-200, encaran la plataforma y el soporte en lo mas lejos posible del torno para operar. Coloque el pie en el refuerzo del control de pie para comprometer el motor para golpetear el cinturón, permitiendo que la plataforma para enrollar la sección del vestigio. Cuando la plataforma alcanza la cima, libera el pie INMEDIATAMENTE. Esto aplicará el ser que vigoriza el freno. Alejese del torno mientras la carga se quita de la plataforma.

### **Bajando el ensamble de la sección del vestigio**

**ADVERTENCIA: ANTES DE BAJAR LAS SECCIONES DEL VESTIGIO, CON CUIDADO REVISE CUIDADOSAMENTE POR LINEAS DE CORRIENTE Y OBJETOS EN LO ALTO.**

### **Descenso de plataforma**

Para bajar la plataforma, el soporte a la derecha o el lado izquierdo del torno y agarrar el mango del freno. Estire o empuje el mango para liberar el freno. Baje la plataforma al suelo a una velocidad lenta (no exceder 50/pies por minuto). Continúe deslizando suavemente la plataforma acercandose al suelo para prevenir el daño a la plataforma o paradas de refuerzo de fondo.